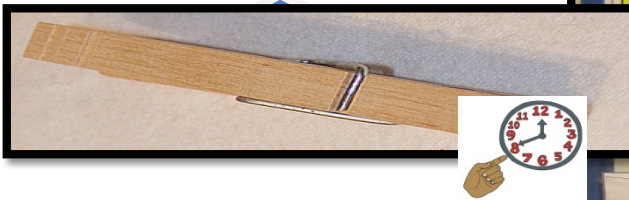
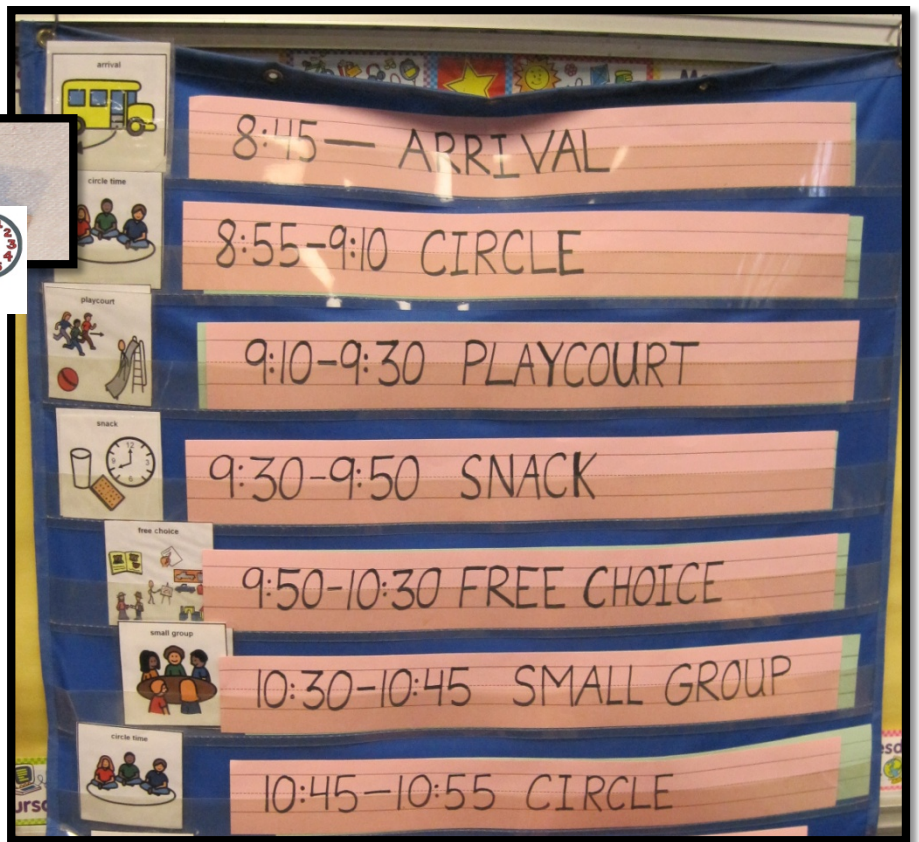




## How to use the 'clock' picture with a daily classroom schedule

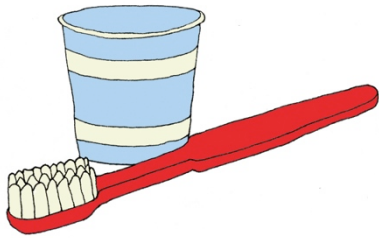


Print, laminate, cut out, and attach the clock illustration to a clothes pin or clip. Then, clip on your daily schedule, next to the current activity on your schedule. Then, move the clock along as the day progresses. A teacher or a child may move the clock symbol to the next activity. However, children who have trouble with classroom transitions may benefit the most from moving the clock to the next activity.



# Daily Schedule

Brush Teeth



Choice Time



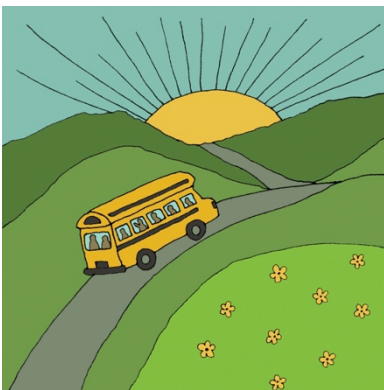
Circle Group on the Floor



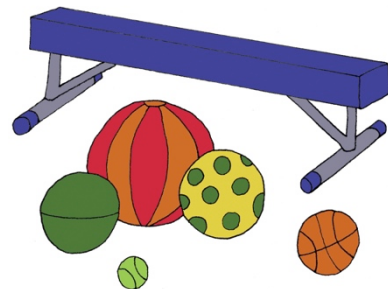
Clock



Field Trip

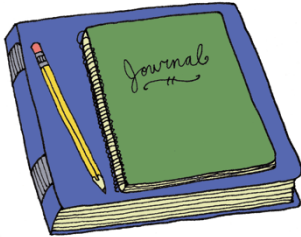


Gym

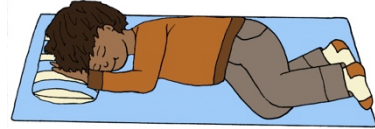


# Daily Schedule

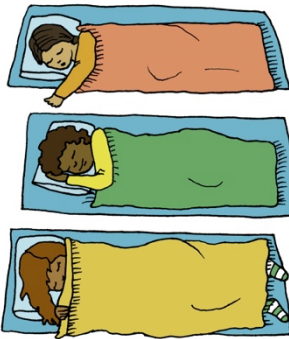
**Journal**



**Nap Time on Mat**



**Nap**



**Party**



**Playground**



**School Bus**

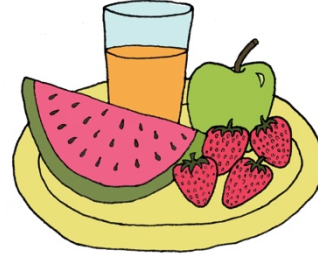


# Daily Schedule

**Small Group at Work**



**Snack**



**Special Visitor**



**Surprise**

